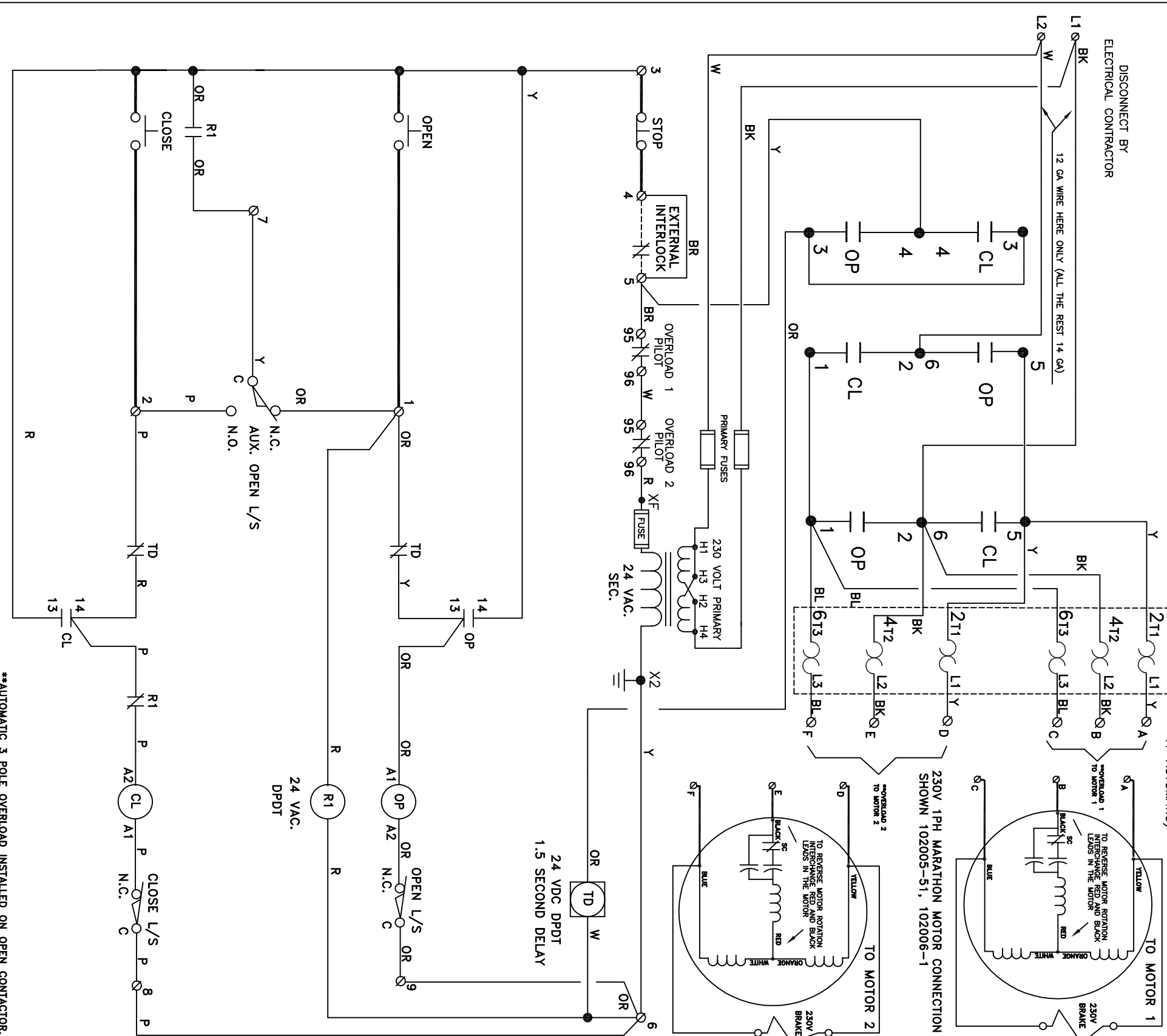
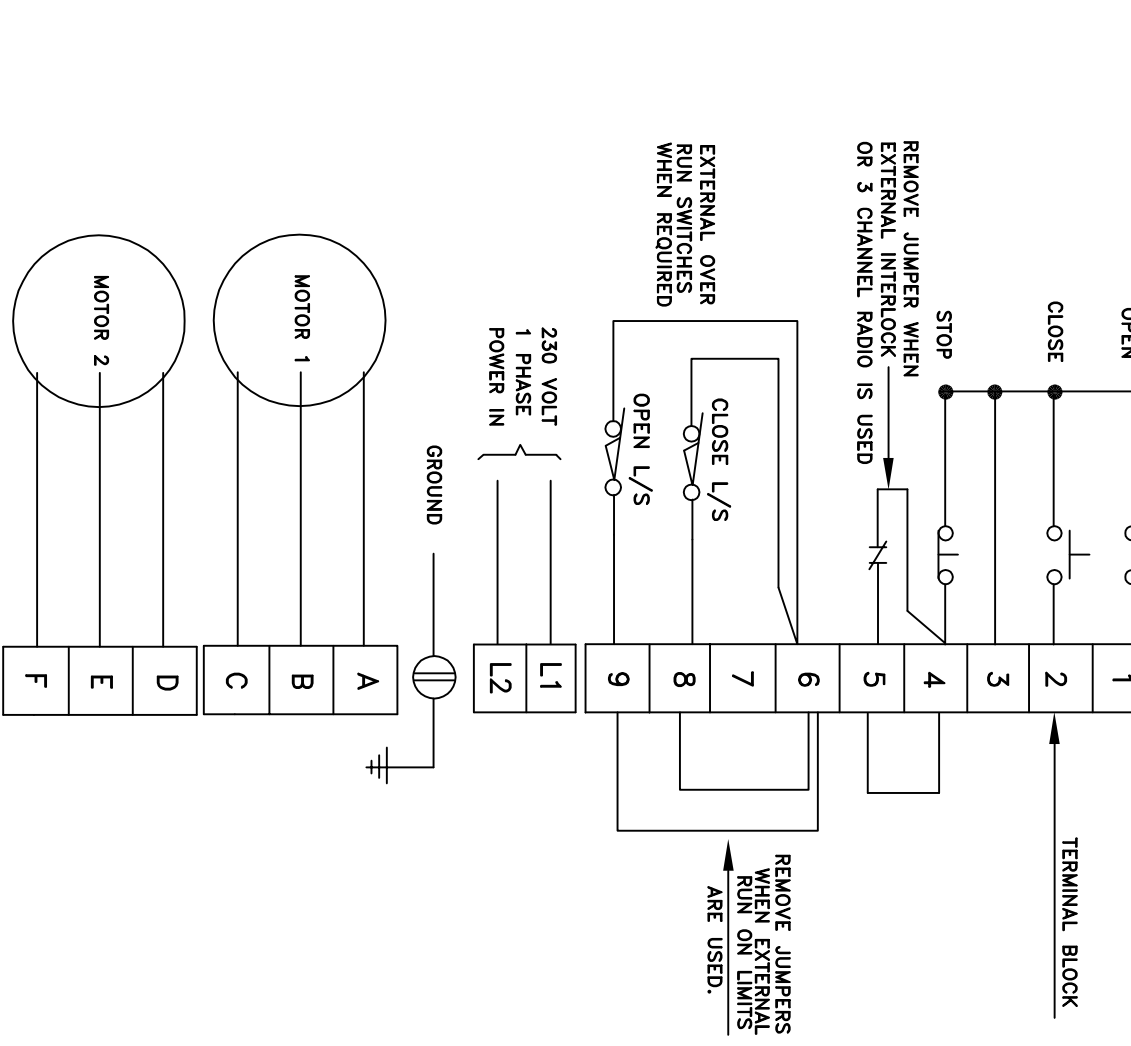


SCHEMATIC



****OVERLOAD** (SWITCH INSIDE WINDOW MUST BE SET TO "A" AUTOMATIC)**

FIELD WIRING



1. We recommend the use of 16 Gauge or Heavier wire for all control circuit wiring.
2. The following devices shall be provided by the installer: UL Listed fusible disconnect switch sized at 240 VAC, 30 Amps, two, 2 hp, 5000 Amps Short Circuit minimum; UL Listed Branch Circuit fuses, Non-Time delay, Type RK5, rated 600 V, 25 A maximum. These devices shall be in a separate enclosure, not mounted on or within the enclosure or subpanel of the UL Listed Control Panel.
3. Field wiring terminal: Terminal Torque 15 in/lbs, Copper wire 10 - 12 AWG, Temp. 60C
4. Contactor LC2D09: Terminal Torque 7 lb/in, Copper wire 10 - 14 AWG, Temp. 60C

PROJECT: _____		THE CHAMBERLAIN GROUP, INC. 845 Lorch Ave, Elmhurst, IL 60126		CDO	
DRAWN BY: S.E.	DATE: 5-17-10	TITLE: 230V 1 PH DUAL MOTOR CONTROLLER			
ENGINEER: S.E.	DATE: 5-17-10	ECN: 15101	DRAWING NUMBER: 10191		
CHECKED BY: -	DATE: -	REL. DATE: 3-5-12	SHEET: 1 OF 1	REV.: D	

****AUTOMATIC 3 POLE OVERLOAD INSTALLED ON OPEN CONTACTOR.**