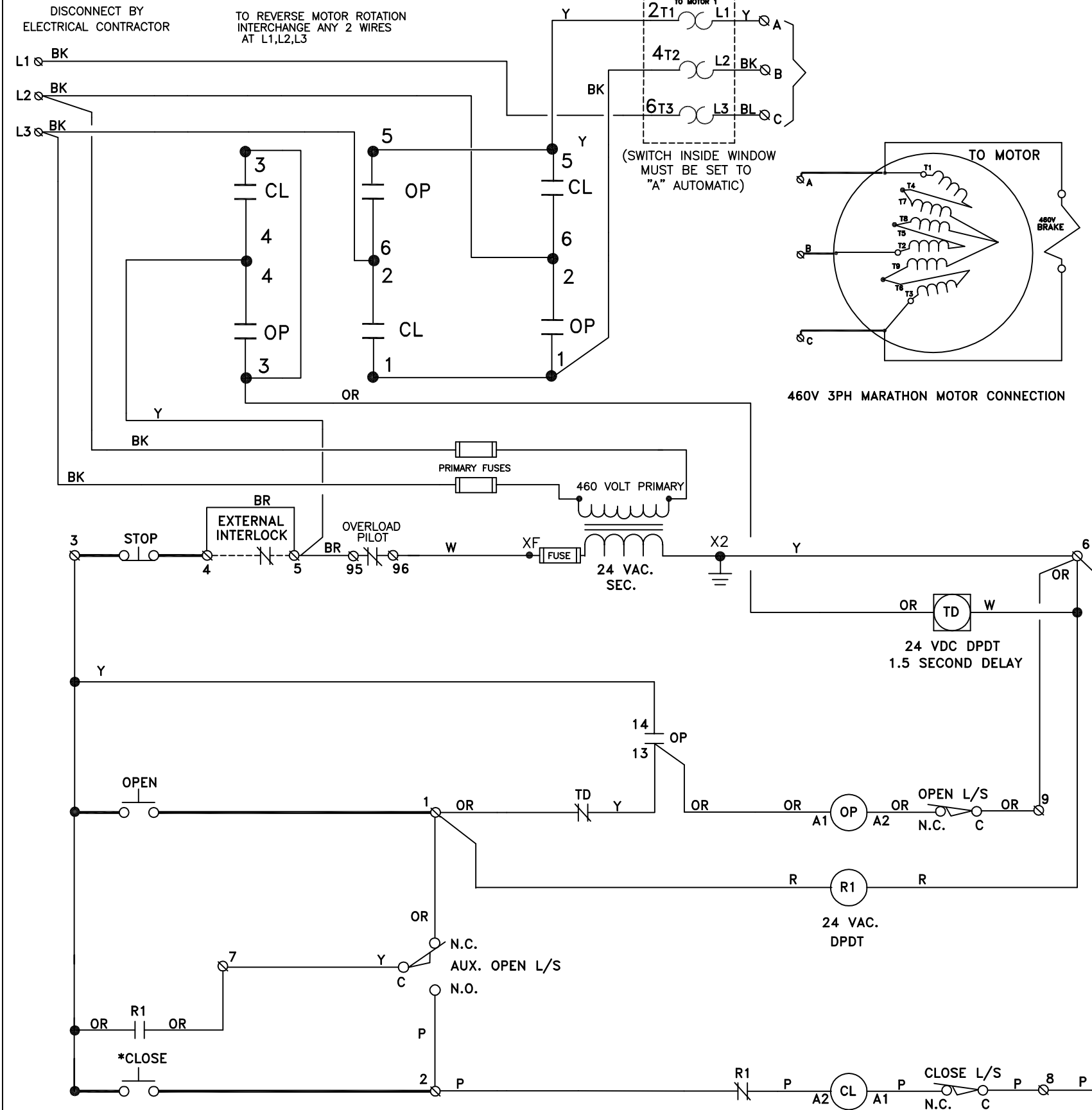
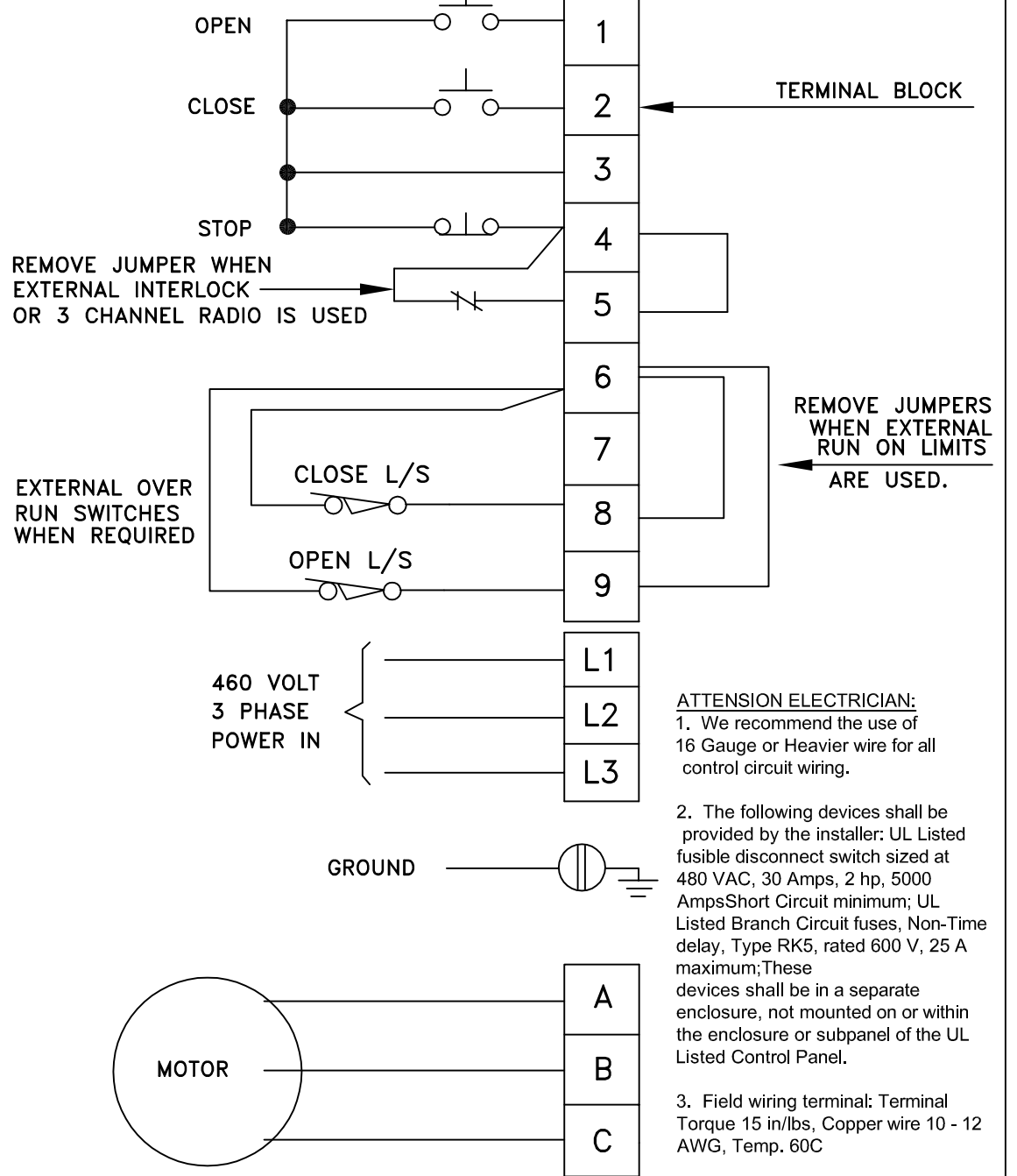


SCHEMATIC



FIELD WIRING



- ATTENTION ELECTRICIAN:**
- We recommend the use of 16 Gauge or Heavier wire for all control circuit wiring.
 - The following devices shall be provided by the installer: UL Listed fusible disconnect switch sized at 480 VAC, 30 Amps, 2 hp, 5000 Amps Short Circuit minimum; UL Listed Branch Circuit fuses, Non-Time delay, Type RK5, rated 600 V, 25 A maximum; These devices shall be in a separate enclosure, not mounted on or within the enclosure or subpanel of the UL Listed Control Panel.
 - Field wiring terminal: Terminal Torque 15 in/lbs, Copper wire 10 - 12 AWG, Temp. 60C
 - Contactors LC2D09: Terminal Torque 7 lb/in, Copper wire 10 - 14 AWG, Temp 60C

ATTENTION ELECTRICIAN
 WE RECOMMEND THE USE OF 16 GAUGE OR HEAVIER WIRE FOR ALL CONTROL CIRCUIT WIRING.

PROJECT: _____		THE CHAMBERLAIN GROUP, INC. CDO	
845 Larch Ave, Elmhurst, IL 60126			
DRAWN BY: S.E.	DATE: 6-17-10	TITLE: 460V 3 PH MOTOR CONTROLLER	
ENGINEER: S.E.	DATE: 6-17-10	ECN: 15101	DRAWING NUMBER: 10200
CHECKED BY: -	DATE: -	REL. DATE: 3-5-12	SHEET: 1 OF 1
		REV.: C	